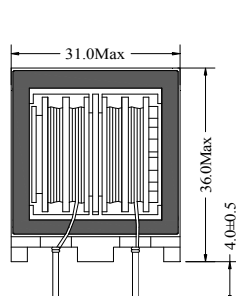




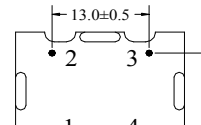
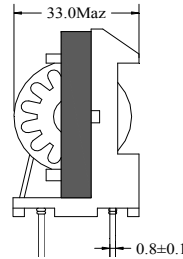
Common Mode Choke

ET28 Series

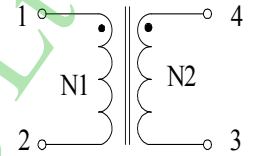
ET28Type 1



Dimensions:(mm)

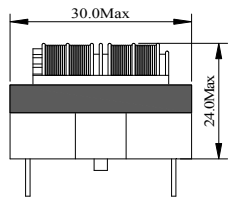


Schematic:

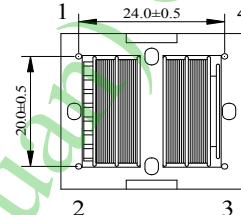
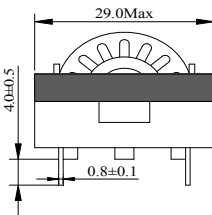


• WINDING.STRA

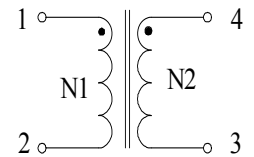
ET28 Type 2



Dimensions:(mm)



Schematic:



• WINDING.STRA

APPLICATIONS:

- EMC suppressors.
- AC line filter.

Feature:

- Line filters suppressing conductive noise ranging from low to high frequencies generated at power supply circuits of the various electronic equipment.
- High safety and reliability .
- Closed magnetic circuit.
- Easy PC board mounting.

ELECTRICAL CHARACTERISTICS:

Patr Number	Inductance (mH)Min	DCR Max.(Ohms)	Irms(A)
PZ-ET28-1.8	1.8	0.050	4.0
PZ-ET28-3.3	3.3	0.088	3.0
PZ-ET28-4.7	4.7	0.100	2.8
PZ-ET28-5.6	5.6	0.130	2.5
PZ-ET28-8.0	8	0.180	2.0
PZ-ET28-12	12	0.270	1.8
PZ-ET28-20	20	0.410	1.5
PZ-ET28-25	25	0.560	1.2
PZ-ET28-35	35	0.780	1.0

★Due to the limited space, the catalogue shows the typical specifications only. For more Specific details (characteristics graph, reliability, and others)

★Design to customer requirement

- 1.Test Frequency : 1KHZ/0.25V. Operating temperature : -50 °C to 130 °C
- 2.Rated Current:The current when temperature of coil increases up to Max. $\Delta T=40^{\circ}C$ ($T_a=20^{\circ}C$)
3. Insulation: AC 2000V 1 minute between line & line
- 4.Insulation Resistance: 100 M Ω Min when DC 500V between line & line